



5/81-83 Cooyong Street City ACT 2601

 2  2  2

\$700 per week

Date available: Now

[Book Inspection](#)

## Nightlife, entertainment, retail and dining all within arm's reach

COVID-19 Update: The 1 person per 2m<sup>2</sup> rule is applicable at all open for inspections. We ask that you assist us in complying with the current social distancing requirements by socially distancing and using the CBR check in app.

Visit our Metropoli tenant hub for floorplans, virtual tours and information on how to apply:

<https://www.thepropertycollective.com.au/geocon/metropol-tenant-hub>

The Property Collective has a range of 2 bedroom apartments available at the soon-to-be-completed Metropoli development. Register your interest today to be notified when exhibitions commence.

The Metropoli precinct "comprising three distinctly different yet carefully connected buildings - is just moments from Glebe Park, the Canberra Centre, Braddon and Lake Burley Griffin. Easy pedestrian connections and close proximity to stage one of Canberra's light rail network means everything you could want is within seamless reach.

These 2 bedroom apartments boast large light filled oversized main bedrooms featuring walk-in-robe & ensuite, while sliding doors off the living areas give access to private balconies, perfect for entertaining guests or enjoying the views.

The communal amenities at Metropoli are sure to impress, with large outdoor courtyards connecting the 3 buildings,

while the level 8 bookable penthouse with sweeping views, infinity edge pool and chef's kitchen will be a popular spot to spend an evening in.

Apartment perks:

- Energy efficient LED lighting throughout
- Flexible floorplans designed to maximise sunlight
- Reverse cycle air-conditioning
- Stone benchtops
- SMEG appliances including induction cooktops
- Double glazed windows
- Full height bathroom tiling
- Semi frameless shower screens
- Clothes dryer

Development perks:

- Level 8 private penthouse overlooking Glebe Park
- Shared chef's kitchen and relaxation room
- 2 x pools
- 3 x rooftop viewing terraces
- Kids play area
- Large outdoor courtyards connecting the 3 buildings

The numbers:

- 1-minute walk to the Canberra Centre and CBD
- 6-minutes walk to Braddon restaurants and caf  s
- 8-minutes walk to Lake Burley Griffin
- 10-minutes walk to ANU
- 12-minutes drive to Canberra Domestic and International Airport

Visit our Metropol tenant hub for floorplans, virtual tours and information on how to apply:

<https://www.thepropertycollective.com.au/geocon/metropol-tenant-hub>

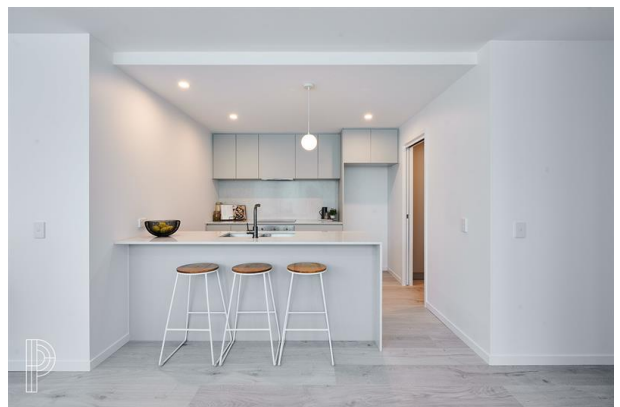
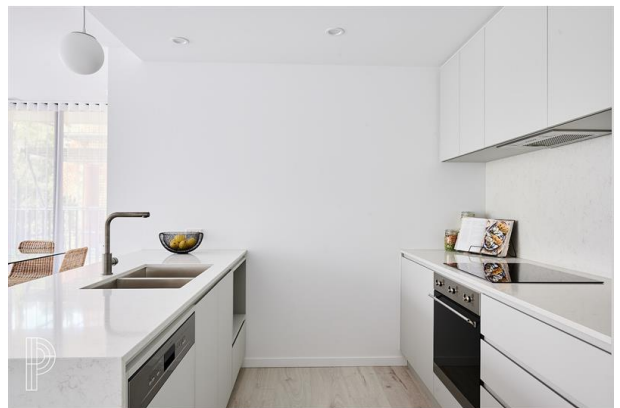
Availability: Now

Pets: Prior consent will need to be given by your property manager to keep pets on the premises. Please contact us for more information.

Photos: Please note photos are of display apartments and are for visual purposes for ads only. A virtual or in-person inspection of the individual apartment will be required prior to approval.

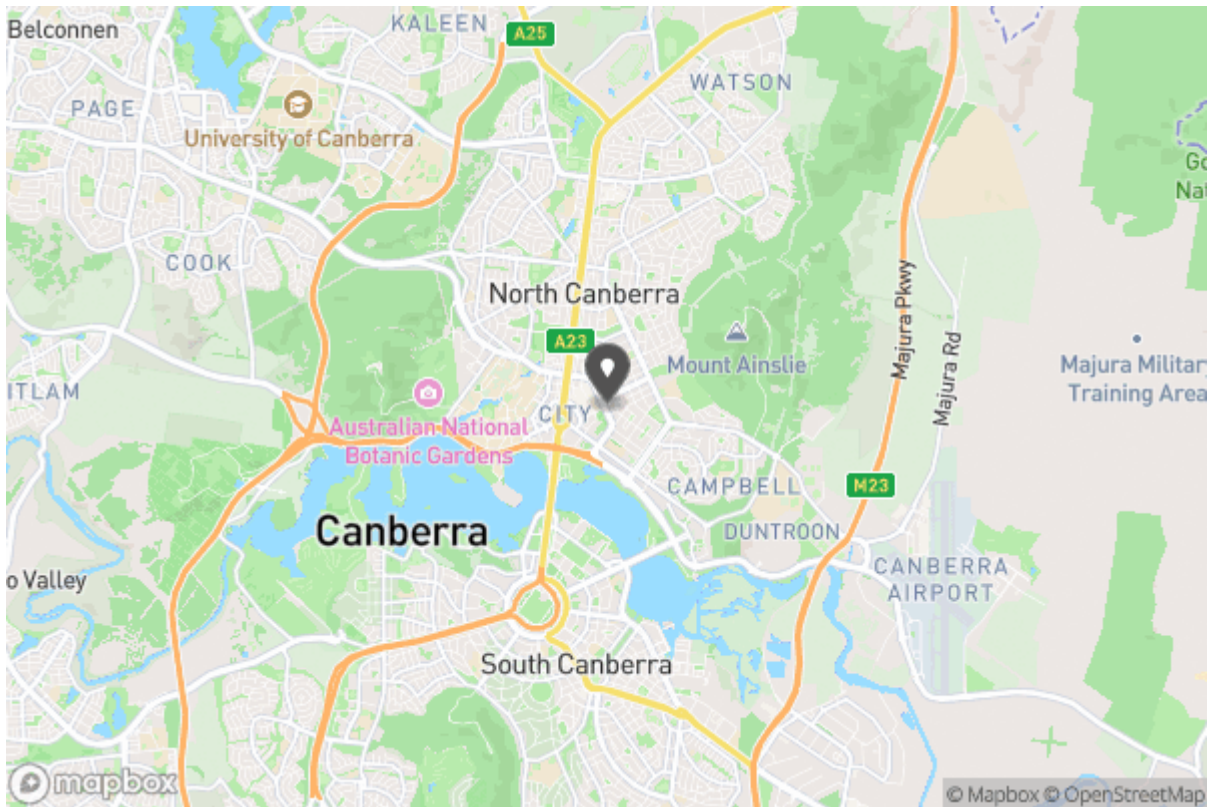
Disclaimer: While all care has been taken in the advertising and marketing of these properties, we do not accept responsibility for any errors or inaccuracies.

# Gallery





# Location Map





Don't forget to  
confirm your  
inspection by  
SMS or email

## Client Concierge

[leasing@thepropertycollective.com.au](mailto:leasing@thepropertycollective.com.au)

175 Anketell Street  
Greenway ACT 2900



## Why Book with The Property Collective

With our agency, you can book Property Inspections 24/7 on your computer, tablet or smartphone. When you do, you will receive an immediate response confirming your booking via email and SMS. Should the property be leased, the inspection time changed or cancelled for any reason, you will be informed the second it happens keeping you up to date.

You can also change or cancel your booking at any time if you no longer wish to attend or the times are no longer suitable. As part of your booking, we will send you reminders of the inspection as well as directions to the property to make the process of inspecting the property seamless.

Finally, should you wish to apply for the property, all of the relevant information including PDF or online applications details will be provided so you can apply as quickly as possible.

# Tenancy Application