



3/81-83 Cooyong Street City ACT 2601

 2  2  1

\$640 per week

Date available: Now

[Book Inspection](#)

## Life, on your doorstep

COVID-19 Update: The 1 person per 2m<sup>2</sup> rule is applicable at all open for inspections. We ask that you assist us in complying with the current social distancing requirements by socially distancing and using the CBR check in app.

Visit our Metropal tenant hub for floorplans, virtual tours and information on how to apply:

<https://www.thepropertycollective.com.au/geocon/metropal-tenant-hub>

The Property Collective has a range of 2 bedroom apartments available.

From the heart of Canberra to the bushland of Mount Ainslie, Metropal offers the best of both worlds. Live life to the fullest with the city's most popular shopping and dining precincts just moments away. While the brilliantly connected transport hub at your doorstep means all of Canberra is within easy reach.

These 2 bedroom apartments offer spacious kitchens with SMEG appliances, including induction cooktop and ducted rangehoods. Designed to maximise natural sunlight, the well-considered floorplans also offer laundries with clothes dryer, double glazing and reverse-cycle air conditioning for year-round comfort.

Comprising three buildings connected by landscaped courtyards, Metropal has been designed to provide the very best

The Property Collective

1 / 7

in cosmopolitan living for residents. With not 1 but 2 pools, rooftop gardens, kids play area and the incredible level 8 penthouse, you're sure to enjoy a superior lifestyle both inside and outside your apartment.

Apartment perks:

- Energy efficient LED lighting throughout
- Flexible floorplans designed to maximise sunlight
- Reverse cycle air-conditioning
- Stone benchtops
- SMEG appliances including induction cooktops
- Double glazed windows
- Full height bathroom tiling
- Semi frameless shower screens
- Clothes dryer

Development perks:

- Level 8 private penthouse overlooking Glebe Park
- Shared chef's kitchen and relaxation room
- 2 x pools
- 3 x rooftop viewing terraces
- Kids play area
- Large outdoor courtyards connecting the 3 buildings

The numbers:

- 1-minute walk to the Canberra Centre and CBD
- 6-minutes walk to Braddon restaurants and caf  s
- 8-minutes walk to Lake Burley Griffin
- 10-minutes walk to ANU
- 12-minutes drive to Canberra Domestic and International Airport

Visit our Metropol tenant hub for floorplans, fact sheets and information on how to apply for pre-approval.

<https://www.thepropertycollective.com.au/geocon/metropol-tenant-hub>

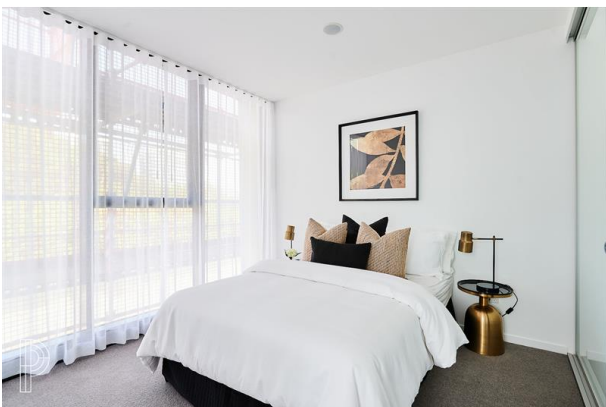
Availability: Now

Pets: Prior consent will need to be given by your property manager to keep pets on the premises. Please contact us for more information.

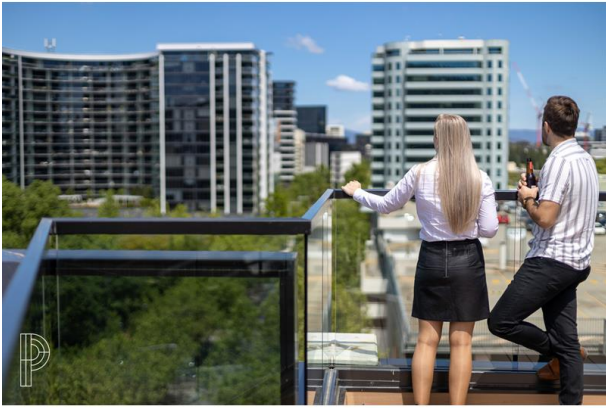
Photos: Please note photos are of display apartments and are for visual purposes for ads only. An virtual or in-person inspection of the individual apartment will be required prior to approval.

Disclaimer: While all care has been taken in the advertising and marketing of these properties, we do not accept responsibility for any errors or inaccuracies.

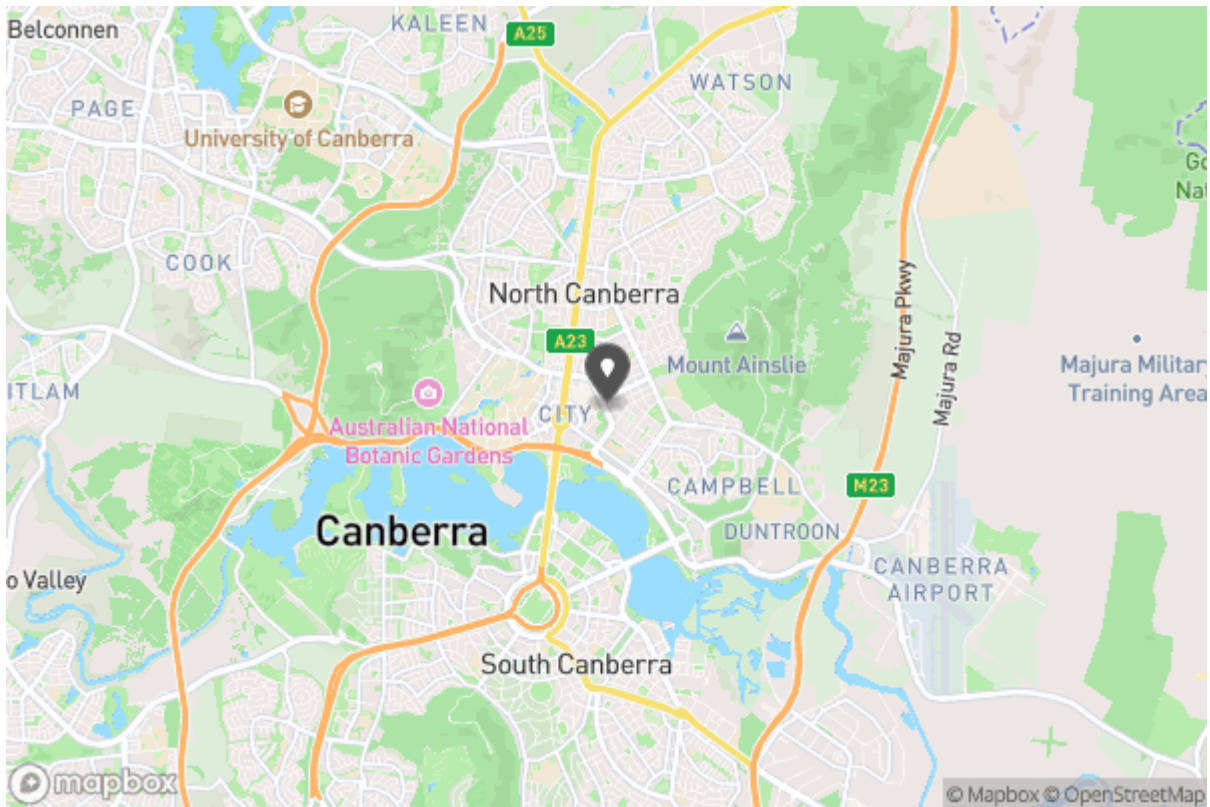
# Gallery







# Location Map





Don't forget to  
confirm your  
inspection by  
SMS or email

## Client Concierge

[leasing@thepropertycollective.com.au](mailto:leasing@thepropertycollective.com.au)

175 Anketell Street  
Greenway ACT 2900



## Why Book with The Property Collective

With our agency, you can book Property Inspections 24/7 on your computer, tablet or smartphone. When you do, you will receive an immediate response confirming your booking via email and SMS. Should the property be leased, the inspection time changed or cancelled for any reason, you will be informed the second it happens keeping you up to date.

You can also change or cancel your booking at any time if you no longer wish to attend or the times are no longer suitable. As part of your booking, we will send you reminders of the inspection as well as directions to the property to make the process of inspecting the property seamless.

Finally, should you wish to apply for the property, all of the relevant information including PDF or online applications details will be provided so you can apply as quickly as possible.

# Tenancy Application