



2/81-83 Cooyong Street City ACT 2601

 2  1  1

\$630 per week

Date available: Now

[Book Inspection](#)

Live at the highest level at Metropol

COVID-19 Update: The 1 person per 2m² rule is applicable at all open for inspections. We ask that you assist us in complying with the current social distancing requirements by socially distancing and using the CBR check in app.

Visit our Metropol tenant hub for floorplans, virtual tours and information on how to apply:

<https://www.thepropertycollective.com.au/geocon/metropol-tenant-hub>

The Property Collective has a range of 2 bedroom apartments available.

With the city's most popular shopping and dining precincts right on its doorstep, Metropol offers the ultimate cosmopolitan lifestyle. Set foot outside at any hour, day and night, and walk straight into the epicentre of Canberra.

These 2-bedroom apartments offer spacious light-filled main bedrooms, engineered timber floors and sliding doors off the living area to the private balcony – many with views over Glebe Park.

The showstopper at Metropol is the luxurious level 8 penthouse available for the exclusive use of residents and their guests. With stunning views across Glebe Park, gourmet kitchen, high-tech entertainment facilities and even a plunge pool, this is the place for residents to reserve for a special night 'away', a private function or impressing visiting friends

and family.

Apartment perks:

- Energy efficient LED lighting throughout
- Flexible floorplans designed to maximise sunlight
- Reverse cycle air-conditioning
- Stone benchtops
- SMEG appliances including induction cooktops
- Double glazed windows
- Full height bathroom tiling
- Semi frameless shower screens
- Clothes dryer

Development perks:

- Level 8 private penthouse overlooking Glebe Park
- Shared chef's kitchen and relaxation room
- 2 x pools
- 3 x rooftop viewing terraces
- Kids play area
- Large outdoor courtyards connecting the 3 buildings

The numbers:

- 1-minute walk to the Canberra Centre and CBD
- 6-minutes walk to Braddon restaurants and caf  s
- 8-minutes walk to Lake Burley Griffin
- 10-minutes walk to ANU
- 12-minutes drive to Canberra Domestic and International Airport

Visit our Metropol tenant hub for floorplans, virtual tours and information on how to apply:

<https://www.thepropertycollective.com.au/geocon/metropol-tenant-hub>

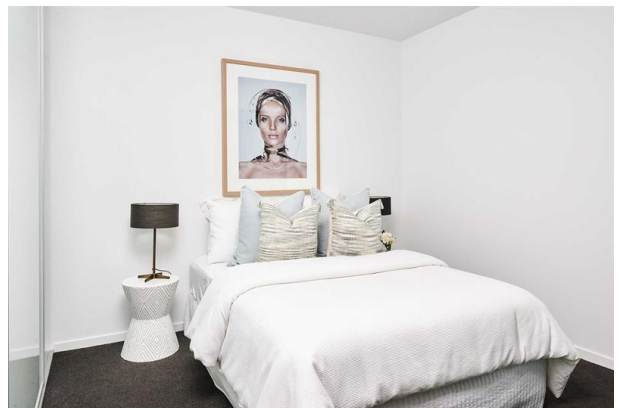
Availability: Now

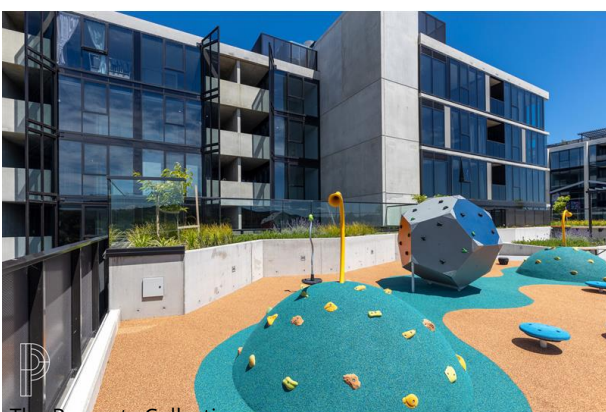
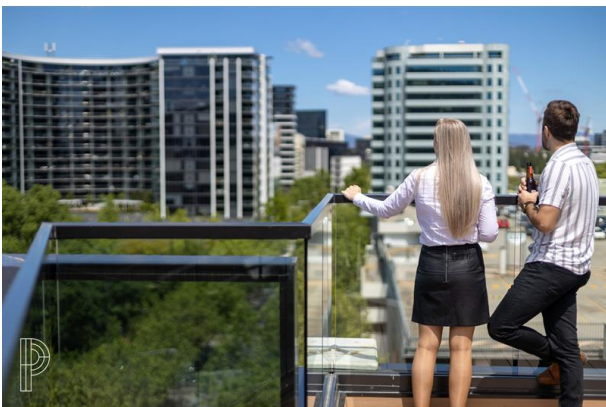
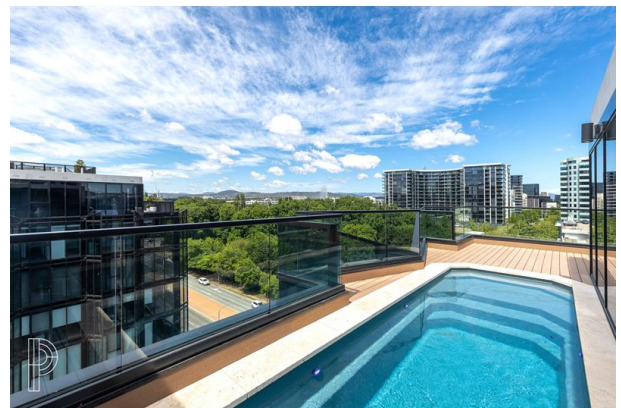
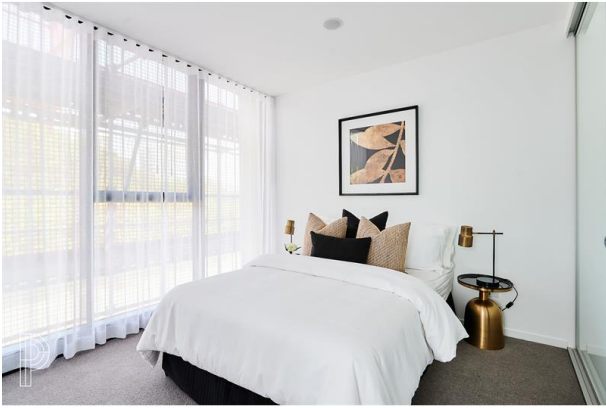
Pets: Prior consent will need to be given by your property manager to keep pets on the premises. Please contact us for more information.

Photos: Please note photos are of display apartments and are for visual purposes for ads only. A virtual or in-person inspection of the individual apartment will be required prior to approval.

Disclaimer: While all care has been taken in the advertising and marketing of these properties, we do not accept responsibility for any errors or inaccuracies.

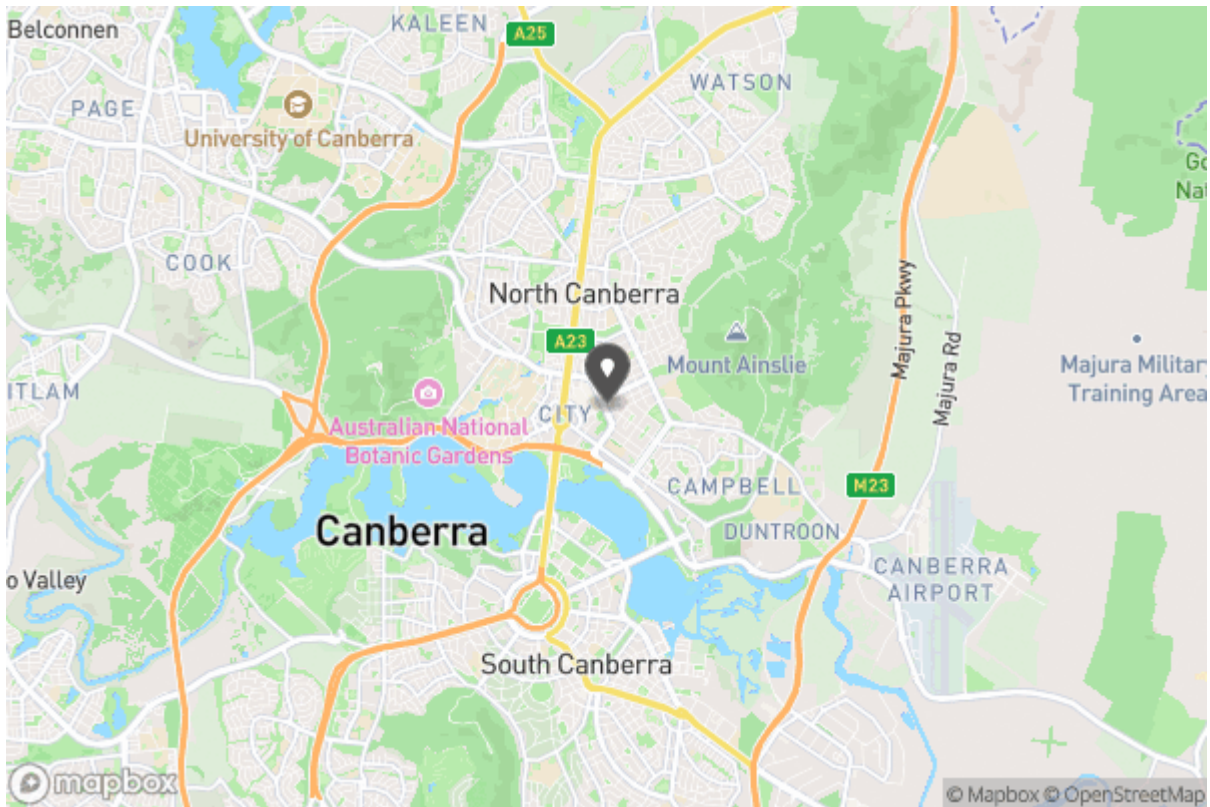
Gallery







Location Map





Don't forget to
confirm your
inspection by
SMS or email

Client Concierge

leasing@thepropertycollective.com.au

175 Anketell Street
Greenway ACT 2900



Why Book with The Property Collective

With our agency, you can book Property Inspections 24/7 on your computer, tablet or smartphone. When you do, you will receive an immediate response confirming your booking via email and SMS. Should the property be leased, the inspection time changed or cancelled for any reason, you will be informed the second it happens keeping you up to date.

You can also change or cancel your booking at any time if you no longer wish to attend or the times are no longer suitable. As part of your booking, we will send you reminders of the inspection as well as directions to the property to make the process of inspecting the property seamless.

Finally, should you wish to apply for the property, all of the relevant information including PDF or online applications details will be provided so you can apply as quickly as possible.

Tenancy Application