



4A Charles Street BENTLEIGH EAST VIC 3165

 4  3  2

\$1,300

Date available: 15 June 2026

[Book Inspection](#)

## STAND OUT TOWNHOUSE

Luxury four-bedroom, three-bathroom townhouse has generous house like dimensions. No expense has been spared to create a spacious living environment, and the design perfectly caters for the requirements of fast paced modern living. Offering contemporary design features, an abundance of space and a cutting edge feel in an outstanding location.

Features include:

### GROUND FLOOR:

- Spacious entry hall with feature staircase
- Large ground floor master or guest bedrooms complete with ensuite bathroom and built-in robe
- Stunning entertainer's kitchen overlooking the open plan living and dining area
- Fully appointed kitchen with stone benchtops, gas cooking, electric oven, dishwasher, huge walk-in pantry, and large breakfast bar
- Laundry with ample storage space and direct side of property access
- Guest powder room for convenience
- Glass sliding doors opening out onto the deck and rear yard
- Beautiful, landscaped gardens designed for easy maintenance

### FIRST FLOOR:

Metropole Melbourne

- Second living area or children's retreat
- Expansive master suite with generous ensuite and a wall of built-in storage
- Luxurious ensuite with generous shower, floor to ceiling porcelain tiles and his and her basins
- Two additional bedrooms both with built-in robes
- Main bathroom with separate bath and shower facilities, floor to ceiling porcelain tiles and luxury finishes

ADDITIONAL FEATURES:

- 6-star energy rating
- Engineered timber flooring
- Split system heating and cooling units throughout
- Great storage spaces on all levels
- Landscaped front and rear yards plus paved driveway
- Single remote garage with direct internal property access plus rear of garage roller door access to the side of house and rear yard
- Driveway parking for an additional vehicle
- Water tank connected to toilets for increased water efficiency
- Dripper system to garden beds with manual timer
- Alarm system and video doorbell

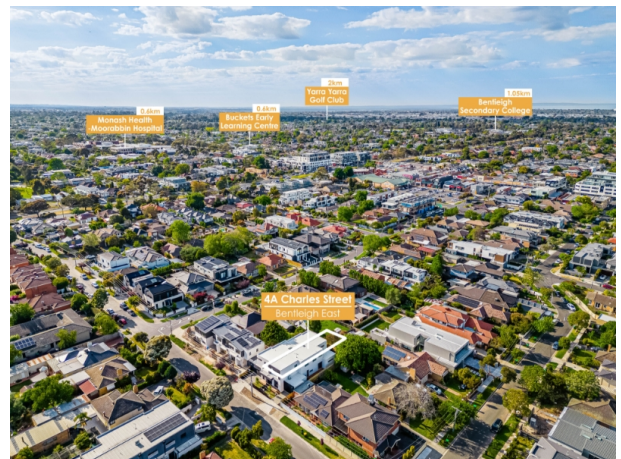
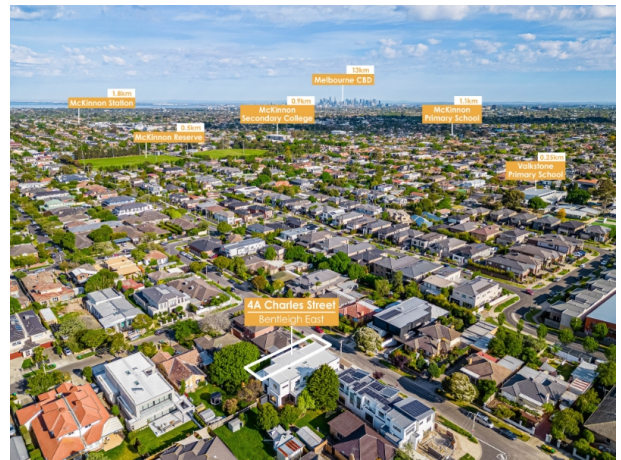
Positioned in a lifestyle plus pocket of Bentleigh East, you're just a 450m walk to the local IGA, pharmacy, deli, gym, cafes, restaurants and take away. 350m away you have access to public transport along East Boundary Road, Bentleigh East skatepark, Bailey Reserve and sporting grounds and Glen Eira Leisure Centre. Positioned in the Valkstone Primary and Bentleigh Secondary College school zones (S.T.S.A), you're also within easy reach of McKinnon Primary and Secondary Schools, Coatesville Primary abundant childcare and Kindergarten options. Moments to Bentleigh train station, Nepean Highway, Westfield Southlands, multiple bayside caf  and shopping precincts as well as the best of bayside beaches.

We make it easy for you to arrange and attend an inspection with Metropole.

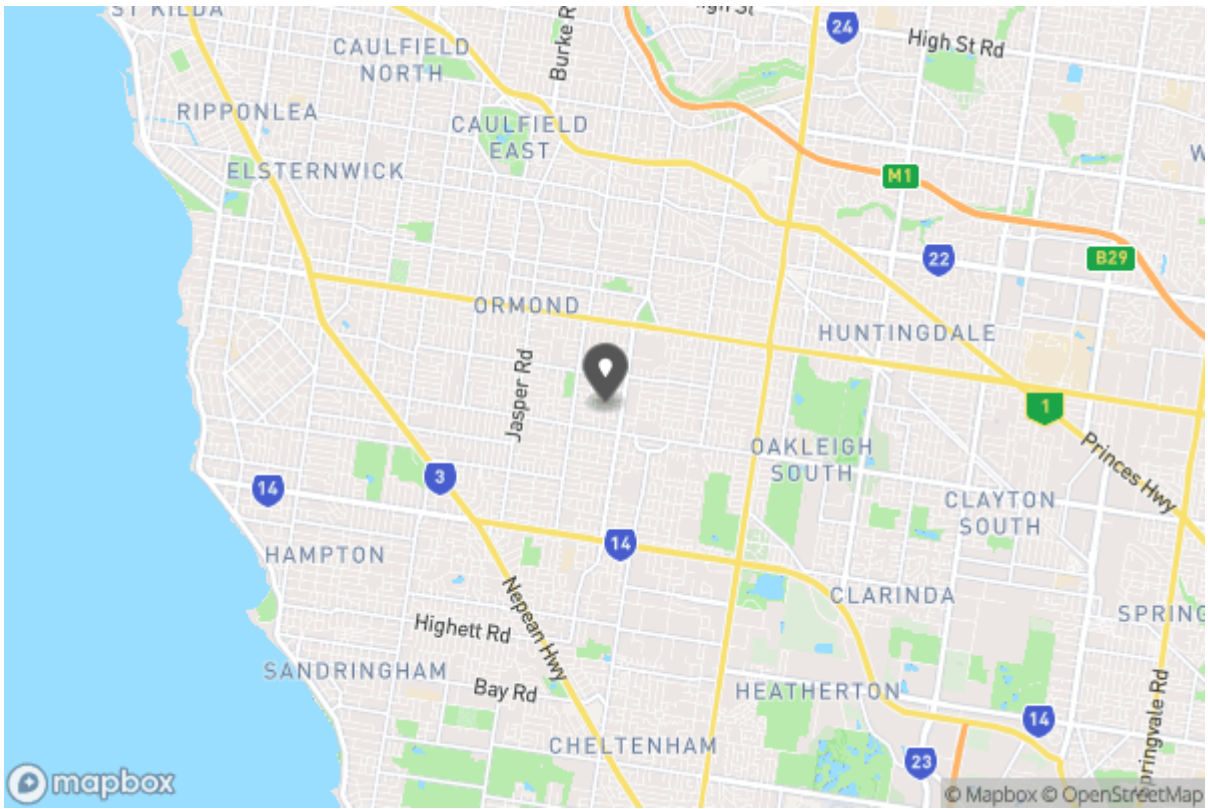
Simply register for one of our advertised property inspections or submit a request for another time that suits you better. Please ensure that you do register your interest so we can make sure that you are kept up to date with any changes or cancellations.

# Gallery



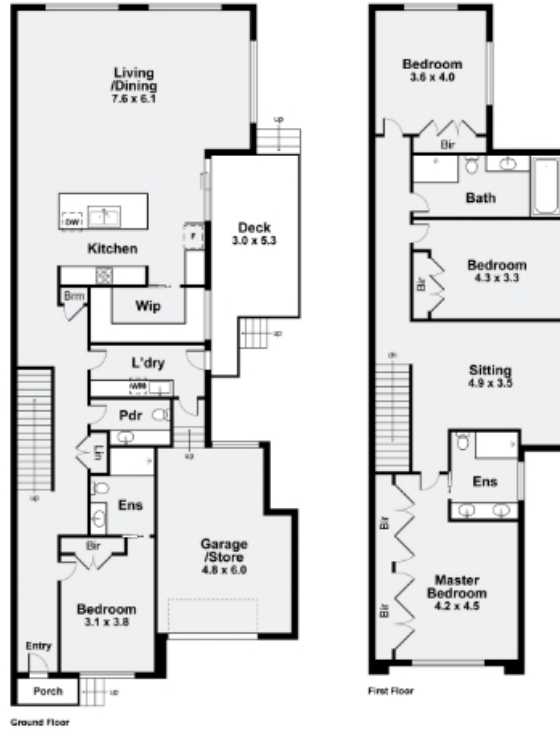


# Location Map



# Floor Plans

## 4A Charles Street, Bentleigh East



Whilst every attempt has been made to ensure the accuracy of this floorplan, measurements of doors, windows, rooms and any other items are approximate only. The producer or agent cannot be held responsible for any errors, omissions or misstatements. This plan is for illustrative purposes only and should be used as such.



Don't forget to confirm your inspection by SMS or email

Shelley Macgregor  
03 9591 8888  
smacgregor@metropole.com.au

03 9591 8888  
Level 2, 181 Bay Street  
Brighton VIC 3186



### Why Book with Metropole Melbourne

With our agency, you can book Property Inspections 24/7 on your computer, tablet or smartphone. When you do, you will receive an immediate response confirming your booking via email and SMS. Should the property be leased, the inspection time changed or cancelled for any reason, you will be informed the second it happens keeping you up to date.

You can also change or cancel your booking at any time if you no longer wish to attend or the times are no longer suitable. As part of your booking, we will send you reminders of the inspection as well as directions to the property to make the process of inspecting the property seamless.

Finally, should you wish to apply for the property, all of the relevant information including PDF or online applications details will be provided so you can apply as quickly as possible.

# Tenancy Application

A copy of the General Tenancy Agreement for this property, including all special conditions is available via the following link:

[Apply Online](#)

<https://2apply.com.au/Property?agentID=metropolemelbourne&uniqueID=IRE4444164>