



38 Rees Crescent ROCKINGHAM WA 6168

 3  2  4

\$800.00 per week

Date available: Now

[Book Inspection](#)

## Spacious Family Home with Theatre, Alfresco & Premium Comfort Features

This well-appointed and thoughtfully designed home offers generous living spaces, quality finishes, and year-round comfort. Perfect for families or professionals seeking space and functionality.

At the front of the home is a separate home theatre with elegant French doors, providing an ideal space for movie nights or a quiet retreat.

The generous master bedroom features its own reverse-cycle air-conditioning unit, ceiling fan, roller shutters, and twin walk-in robes that lead through to a private ensuite. The ensuite bathroom is beautifully appointed with a luxurious corner bath, twin vanity basins, and a separate toilet.

The heart of the home is the open-plan kitchen, meals, and family area, which flows seamlessly to the alfresco, making it perfect for entertaining. The spacious kitchen includes a built-in corner pantry, fridge recess, ample cupboard space, double sinks, dishwasher, reverse-cycle air-conditioning, and a large benchtop that doubles as a breakfast bar. The family area also has its own reverse-cycle air-conditioning unit.

Minor bedrooms are all good-sized and include built-in robes and ceiling fans. The main bathroom offers a vanity and

shower, while the separate laundry includes a linen cupboard for additional storage.

Parking is well catered for with 2 double garages offering space for up to four vehicles, remote access doors, a built-in compressor, and a small workshop area.

Outdoors, enjoy fully enclosed, easy-care gardens with artificial turf. The home also features ducted evaporative cooling and ducted gas heating for year-round comfort.

Key Features Include:

Separate home theatre with French doors

Master suite with ensuite, twin WIRs, and roller shutters

Open-plan living opening to alfresco

Well-equipped kitchen with breakfast bar

Reverse-cycle air-conditioning plus ducted evaporative cooling & gas heating

2 x Double garages with workshop area & remote doors

Fully enclosed, low-maintenance gardens

Across the road from park

A quality home offering space, comfort, and practicality - inspection is a must!

Available Now

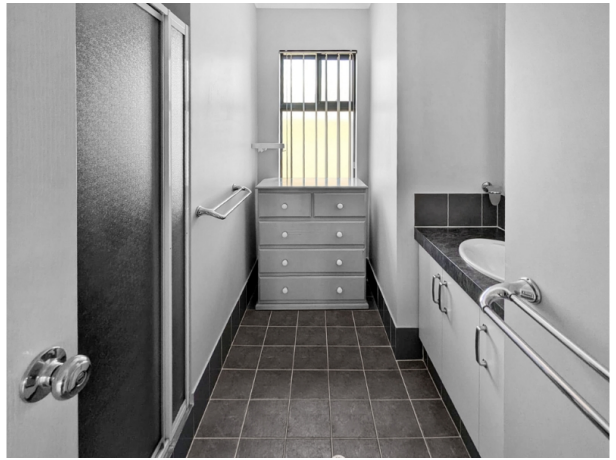
Independent enquiries about the information included in this document. Perth Rental Management provides this document without any express or implied warranty as to its accuracy or currency. Perth Rental Management accepts no responsibility for the results of any actions taken, or reliance placed upon this document by a client.

Home opens will be held as per the inspections tab below, applications can be done through this link - <https://app.2apply.com.au/Agency/PerthRentalManagement>

If you wish to view the property you must register through 2apply .

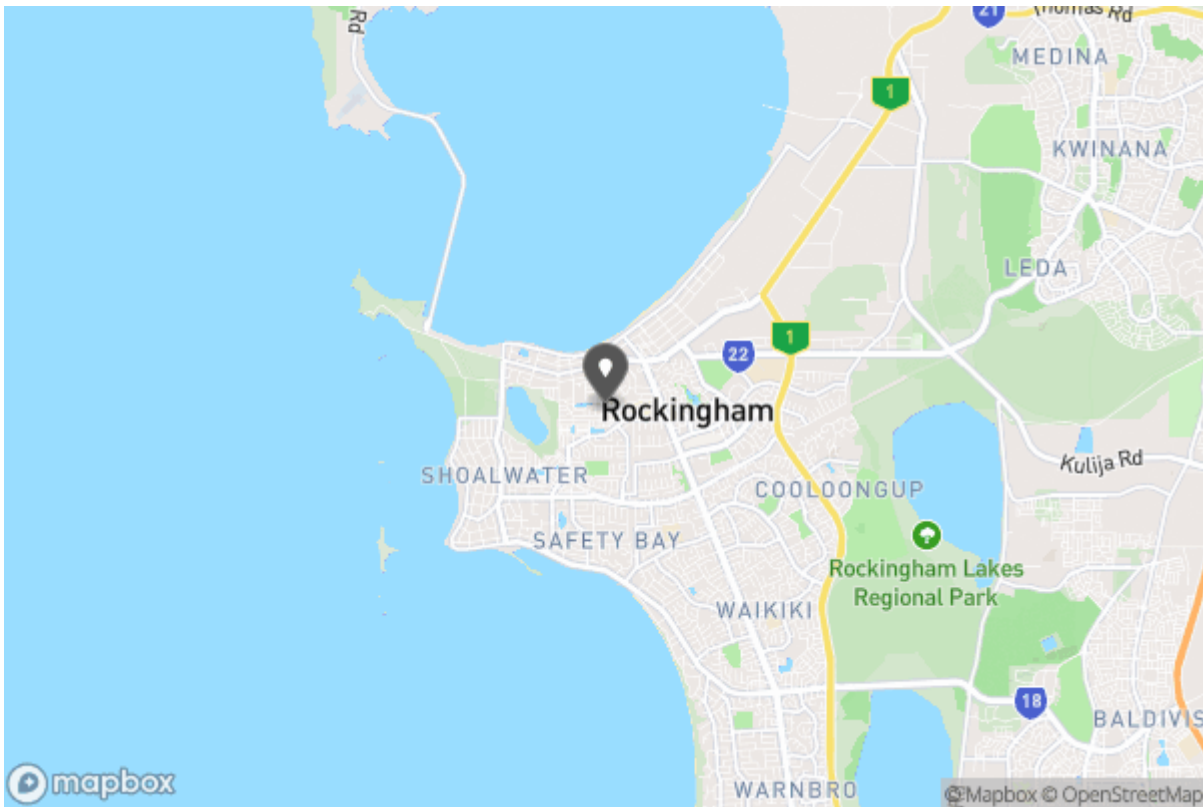
# Gallery







# Location Map





Don't forget to confirm your inspection by SMS or email

Cherylee Lawrence

pm2@perthrm.com.au

0861589924  
22 Ormsby Terrace  
Mandurah WA 6210



### Why Book with Perth Rental Management

With our agency, you can book Property Inspections 24/7 on your computer, tablet or smartphone. When you do, you will receive an immediate response confirming your booking via email and SMS. Should the property be leased, the inspection time changed or cancelled for any reason, you will be informed the second it happens keeping you up to date.

You can also change or cancel your booking at any time if you no longer wish to attend or the times are no longer suitable. As part of your booking, we will send you reminders of the inspection as well as directions to the property to make the process of inspecting the property seamless.

Finally, should you wish to apply for the property, all of the relevant information including PDF or online applications details will be provided so you can apply as quickly as possible.

# Tenancy Application

A copy of the General Tenancy Agreement for this property, including all special conditions is available via the following link:

[Apply Online](#)

<https://2apply.com.au/Property?agentID=V-PerthRentalManagement&uniqueID=R4159929>