



27A Clements Street Bentleigh East VIC 3165

 4  2  2

\$1,100

Date available: Now

[Book Inspection](#)

Stunning and spacious 4-bedroom home

Perfect for the modern-day family. Two levels of high-end finishes, well thought-out floor plan, and this light filled townhouse is nothing short of quality and ready to be called home.

Downstairs:

Open plan living at its finest with large living/dining room and the opportunity to expand out to the deck & secure backyard, perfect for entertaining in the warmer months. Kitchen has been designed around convenience with stainless steel appliances, stone top bench tops, walk in pantry, gas cooking, dishwasher and plenty of storage. The master bedroom is located downstairs with ensuite and walk in robe. Finishing off the lower level is a study area at the front of the home, separate power room and laundry

Upstairs:

Second living zone upstairs, perfect for a kids retreat with three large bedrooms with built in robes. Luxury modern bathroom with separate bathtub and shower.

Other features include ducted heating and evaporative cooling, alarm system, spacious yard with a deck leading from the lounge area, stacker doors opening to the backyard, single remote lock up garage with internal access and additional area to park in front.

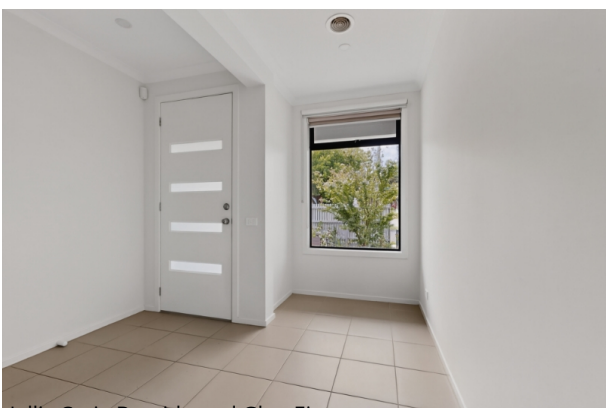
27A Clements Street Bentleigh East VIC 3165

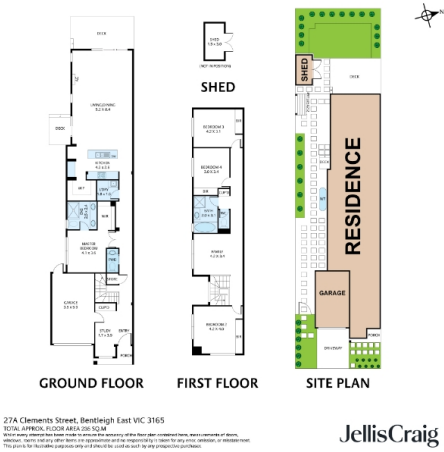
Conveniently located to McKinnon Primary and McKinnon secondary college, and short distance to coffee shops on Tucker Road, McKinnon Oval reserve and access to Bentleigh East shopping strip. This home will sure to impress

Please click ["Book Inspection"](#) or ["Email Agent"](#) to register for the inspection. Open for inspections and property availability are subject to change and cancellations, registering your details will ensure you are immediately notified via SMS of any changes or cancellations to inspection times.

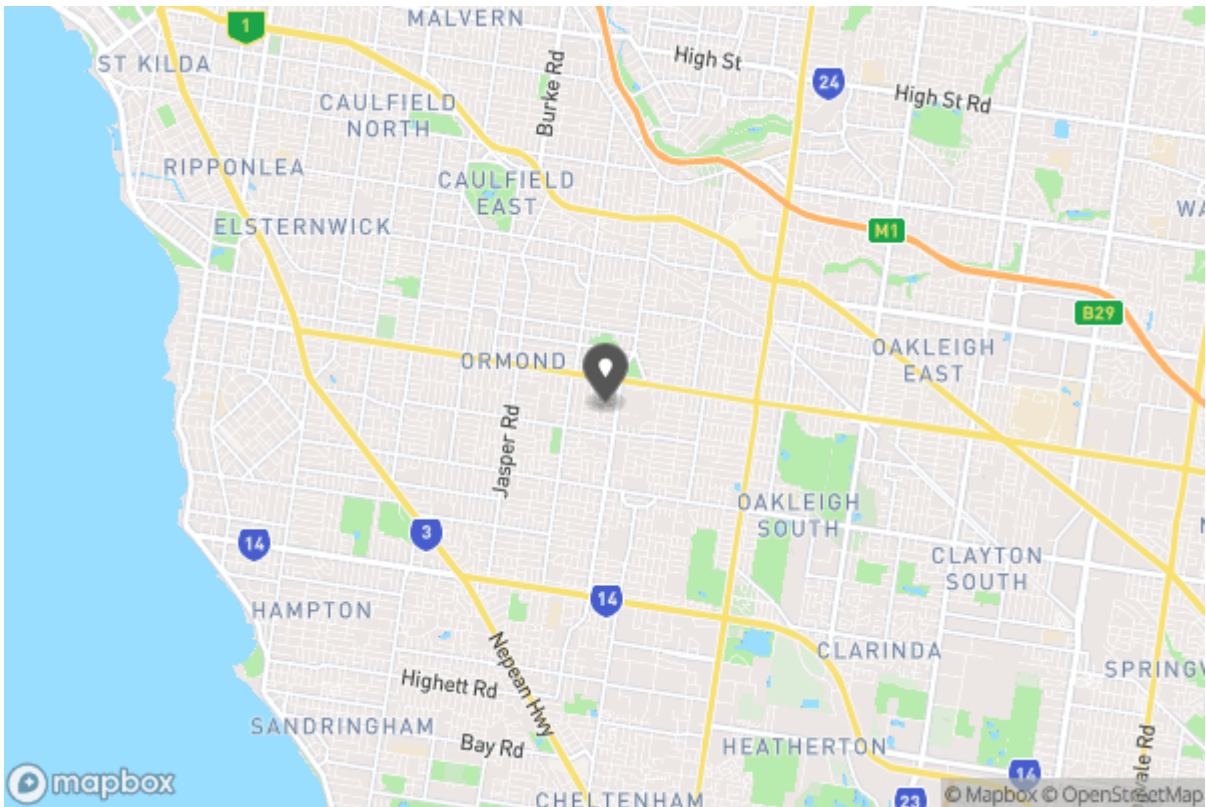
Gallery







Location Map





Don't forget to
confirm your
inspection by
SMS or email

Alyssia Christo

alyssiachristo@jellisrcraig.com.au

0447870261

Level 1, 277/279 Centre Road
Bentleigh VIC 3204



Why Book with Jellis Craig Bayside and Glen Eira

With our agency, you can book Property Inspections 24/7 on your computer, tablet or smartphone. When you do, you will receive an immediate response confirming your booking via email and SMS. Should the property be leased, the inspection time changed or cancelled for any reason, you will be informed the second it happens keeping you up to date.

You can also change or cancel your booking at any time if you no longer wish to attend or the times are no longer suitable. As part of your booking, we will send you reminders of the inspection as well as directions to the property to make the process of inspecting the property seamless.

Finally, should you wish to apply for the property, all of the relevant information including PDF or online applications details will be provided so you can apply as quickly as possible.

Tenancy Application

A copy of the General Tenancy Agreement for this property, including all special conditions is available via the following link:

[Apply Online](#)

<https://2apply.com.au/Property?agentID=LO-JCBENTLEIGH&uniqueID=1816425>

More Information

For more information about renting through Jellis Craig Bayside and Glen Eira, head to

<http://www.jellisraig.com.au>

To view more properties

[More Properties](#)

<http://www.jellisraig.com.au>