



Metropole  
PROPERTY MANAGEMENT

1A Plymouth Street BENTLEIGH EAST VIC  
3165

 4  3  2

\$1,100

Date available: 10 December 2024

[Book Inspection](#)

## LUXURIOUS FOUR BEDROOM RESIDENCE IN BENTLEIGH EAST

Boasting its own street frontage, this family-sized four bedroom, three and a half bathroom home offers exceptional quality and style throughout. Located in a premiere Bentleigh East lifestyle locale within the Coatesville Primary School and Bentleigh Secondary College school zones.

Features include:

Downstairs:

- Beautiful European Oak timber floors and high ceilings throughout
- Powder room, perfect for visiting guests
- Guest bedroom complete with floor to ceiling built-in robes and ensuite bathroom
- Open plan living, dining and kitchen area, ideal for entertaining
- Built-in cabinetry/entertaining unit in the lounge area
- Stunning and bright kitchen, with ample storage space, stunning bench tops and state-of-the-art, stainless-steel appliances including gas cooking, electric oven and a dishwasher
- Separate laundry with built-in cabinetry and external access to the backyard
- Floor to ceiling glass stacker sliding doors in the living area which open up to a private and landscaped backyard

Metropole Melbourne

1A Plymouth Street BENTLEIGH EAST VIC 3165

Upstairs:

- Plush carpet
- Built-in linen cupboard
- Second living area/retreat with built-in cabinetry/entertaining unit
- Luxurious master bedroom suite with walk-in robe and stunning ensuite bathroom with polished porcelain tiles, quality matte black fixtures, infinity shower with waterfall style showerhead and a separate soaking bathtub
- Two additional, generously proportioned bedrooms, with floor to ceiling built-in robes
- Central family bathroom with polished porcelain tiles and fitted with quality matte black fixtures, infinity shower with waterfall style showerhead and a separate soaking bathtub

Additional Features include:

- Alarm system
- Ducted heating and cooling throughout
- Intercom system
- Under-stairs store room
- Remote controlled, double-length tandem garage with built in cupboards for additional storage

A stunning residence, all within close proximity to Gardener Reserve, GESAC Aquatic and Leisure Centre, Centre Road shops, easy access to public transport and close to Chadstone Shopping Centre - the fashion capital!

Looking to inspect this property?

Click on the "Book Inspection" button, provide us with your contact details and you are registered and ready to go!

Where there are no set advertised inspections, or the times listed don't suit, click on the "Request an Inspection" button, pop in your contact details and we will be in touch to arrange an inspection.

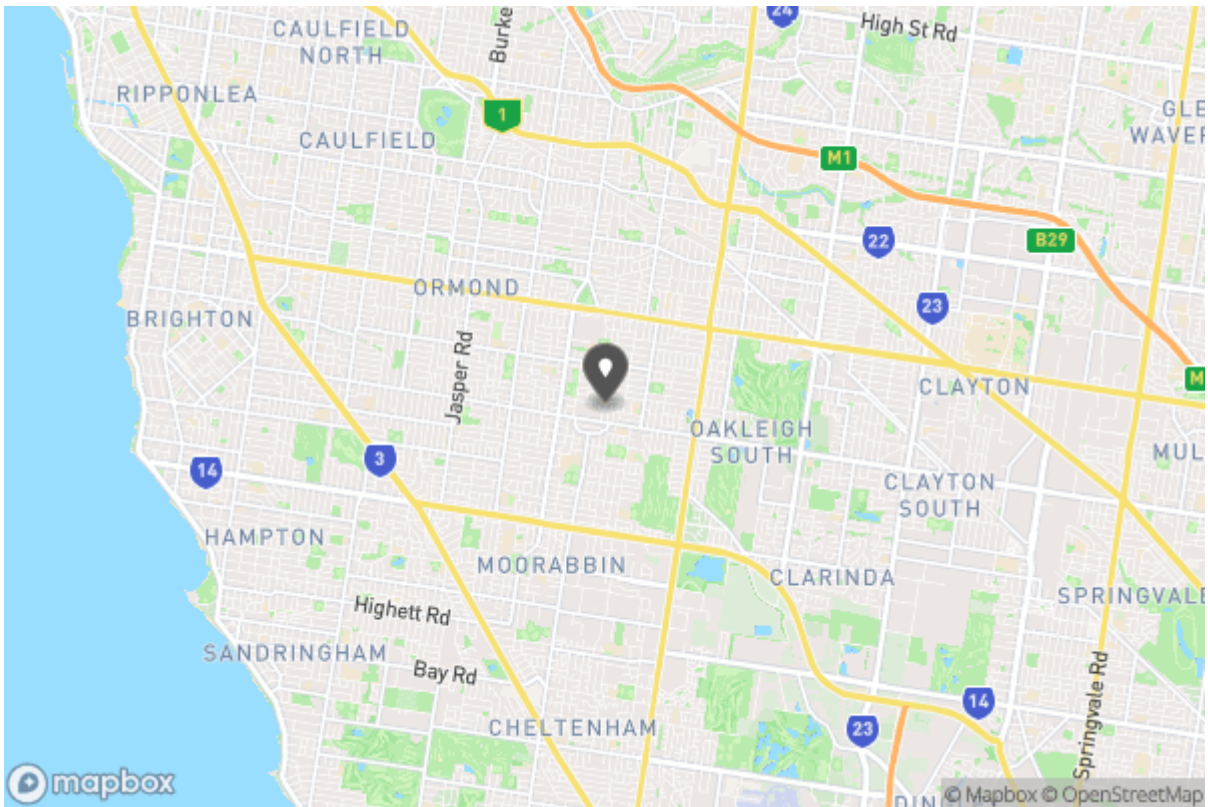
Please ensure that you register for inspections. If no one registers for an inspection time, the inspection may not proceed. Plus, by registering you will be automatically advised of any changes, updates, cancellations or future inspections.

# Gallery





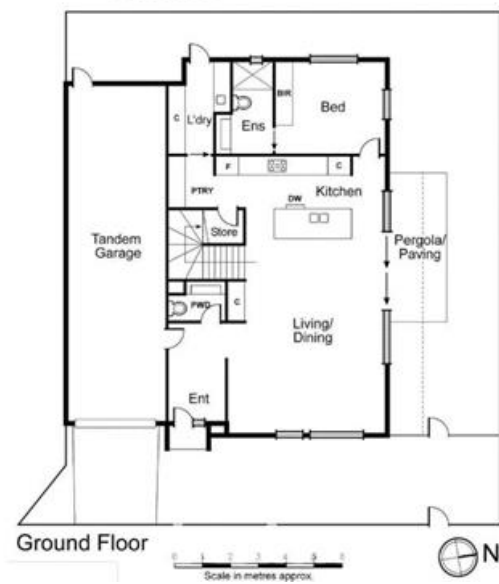
# Location Map



# Floor Plans



First Floor



Ground Floor

Scale in metres approx.





Don't forget to confirm your inspection by SMS or email

Megan Smith  
03 9591 8888  
msmith@metropole.com.au

03 9591 8888  
Level 2, 181 Bay Street  
Brighton VIC 3186



### Why Book with Metropole Melbourne

With our agency, you can book Property Inspections 24/7 on your computer, tablet or smartphone. When you do, you will receive an immediate response confirming your booking via email and SMS. Should the property be leased, the inspection time changed or cancelled for any reason, you will be informed the second it happens keeping you up to date.

You can also change or cancel your booking at any time if you no longer wish to attend or the times are no longer suitable. As part of your booking, we will send you reminders of the inspection as well as directions to the property to make the process of inspecting the property seamless.

Finally, should you wish to apply for the property, all of the relevant information including PDF or online applications details will be provided so you can apply as quickly as possible.

# Tenancy Application

A copy of the General Tenancy Agreement for this property, including all special conditions is available via the following link:

[Apply Online](#)

<https://2apply.com.au/Property?agentID=metropolemelbourne&uniqueID=IRE2294577>