



18 Ardeer Court Meadow Heights VIC 3048

 3  1  3

\$490 pw

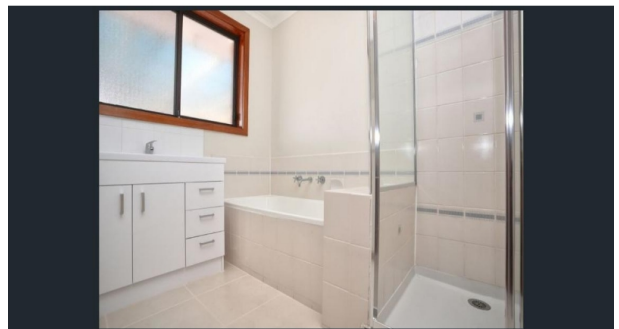
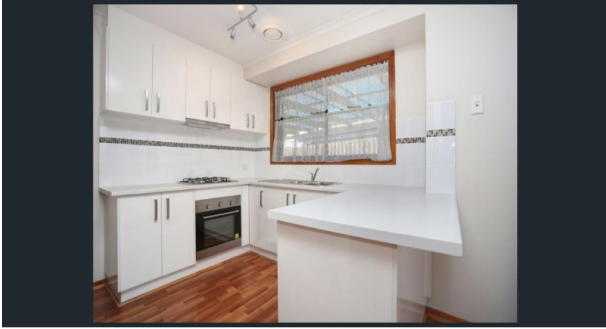
Date available: Now

[Book Inspection](#)

## THREE BEDROOM FAMILY HOME IN PERFECT LOCATION

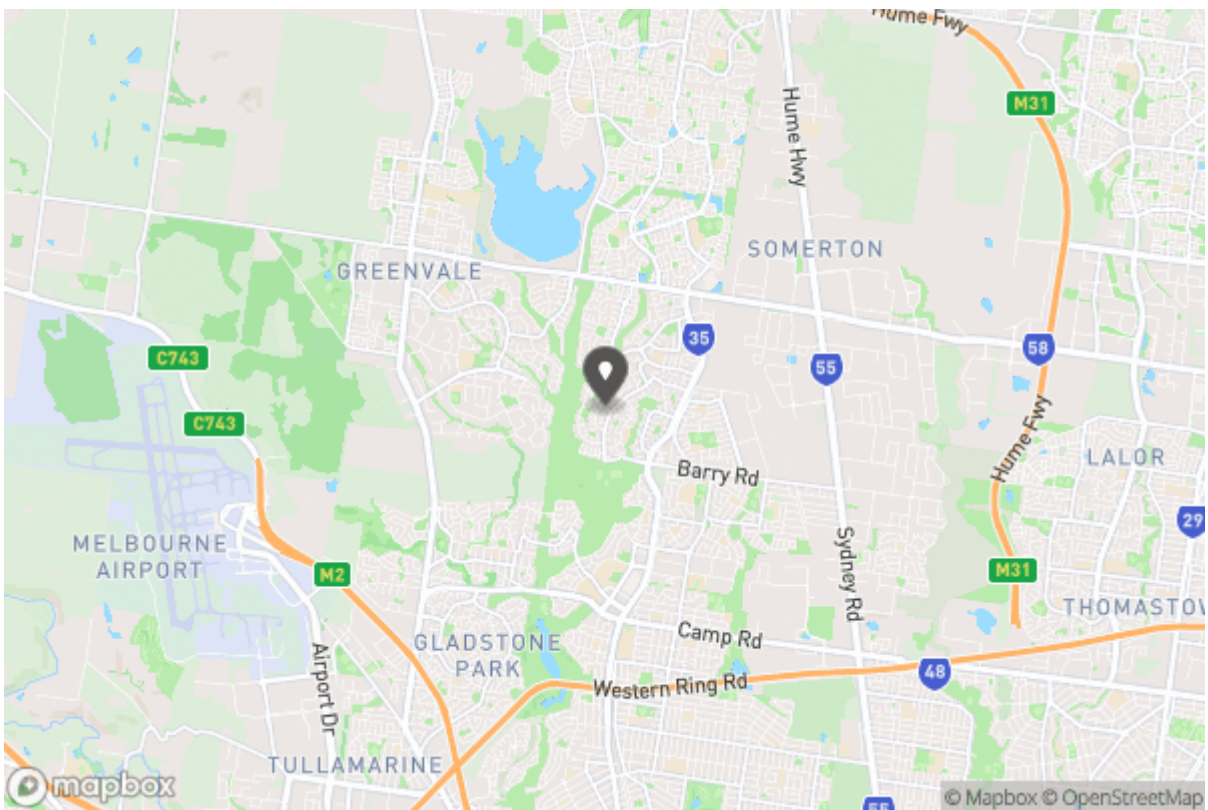
This home is just minutes walking distance to local primary schools, Meadow Heights shopping, parks and local bus service. Comprises three comfortable bedrooms with BIR, large living, kitchen with dining area, central bathroom with bath and shower, good sized laundry, single lock-up garage and covered outdoor area perfect for year around entertaining. Extra features include; gas heating, split system, near new stainless-steel appliances, new window furnishings, floorboards throughout & loads of storage and much more.

# Gallery





# Location Map







Don't forget to confirm your inspection by SMS or email

Jeyda Ergene

jergene@barryplant.com.au

03 9300 2344  
781 Pascoe Vale Road  
Glenroy VIC 3046



### Why Book with Barry Plant Glenroy

With our agency, you can book Property Inspections 24/7 on your computer, tablet or smartphone. When you do, you will receive an immediate response confirming your booking via email and SMS. Should the property be leased, the inspection time changed or cancelled for any reason, you will be informed the second it happens keeping you up to date.

You can also change or cancel your booking at any time if you no longer wish to attend or the times are no longer suitable. As part of your booking, we will send you reminders of the inspection as well as directions to the property to make the process of inspecting the property seamless.

Finally, should you wish to apply for the property, all of the relevant information including PDF or online applications details will be provided so you can apply as quickly as possible.

# Tenancy Application

## More Information

For more information about renting through Barry Plant Glenroy, head to <http://www.barryplant.com.au/glenroy/>

To view more properties

[More Properties](#)

<https://www.barryplant.com.au/offices/glenroy>